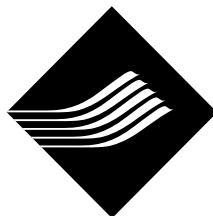
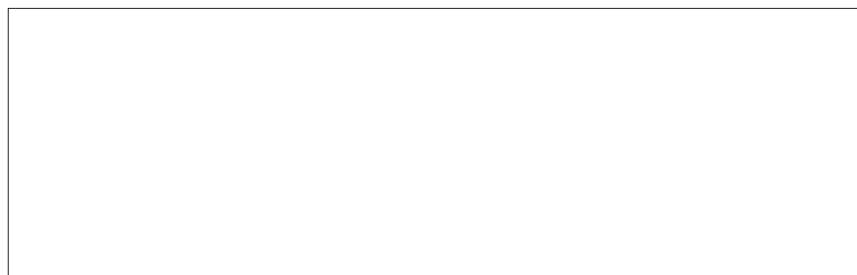


Institutional Research Report



OAKLAND
COMMUNITY
COLLEGE



OAKLAND
COMMUNITY
COLLEGE

**Official Enrollment Report
One Tenth Day of Session, Summer I 2009**

**Prepared by:
The Office of Institutional Research
May 2009**

TABLE OF CONTENTS

Executive Summary	4
One-Tenth Day of Session, Student Credit Hours	5
One-Tenth Day of Session, Student Headcount	6
One-Tenth Day of Session, Student Credit Hours per Student	
College-Wide	7
Auburn Hills	8
Highland Lakes	9
Orchard Ridge	10
Royal Oak	11
Southfield	12



OAKLAND
COMMUNITY
COLLEGE

**OFFICIAL ENROLLMENT
SUMMER I 2009, ONE-TENTH DAY OF SESSION (5/26/09) REPORT
EXECUTIVE SUMMARY**

The following report contains data related to: 1) the number of student credit hours; 2) total student headcount; and 3) the number of credits per student. In addition, Institutional Research has added a section to the One-Tenth Day Report that compares College-Wide One-Tenth Day enrollment figures with First Day of Session figures for the same term.

All individual campus Student Credit Hours and Headcounts can be found in the Credits per Student tables.

This report can be summarized by the following:

- College-Wide Student Credit Hours (80,928.50) **increased** by 20.1% when compared to Summer I 2008. Compared to Summer I 2005, total Student Credit Hours **increased** by 23.9%.
- Student Headcount (16,016) at the college-wide level has **increased** by 16.4% since 2008, and **increased** by 16.3% since Summer I 2005.
- College-Wide Credit Hours per Student (5.05) **increased** 3.1% since last year. Over the five-year period, this figure has **increased** by 6.5%.

Credit hours, headcount, and credit hours per student have all **increased** over the one-year and five-year periods.

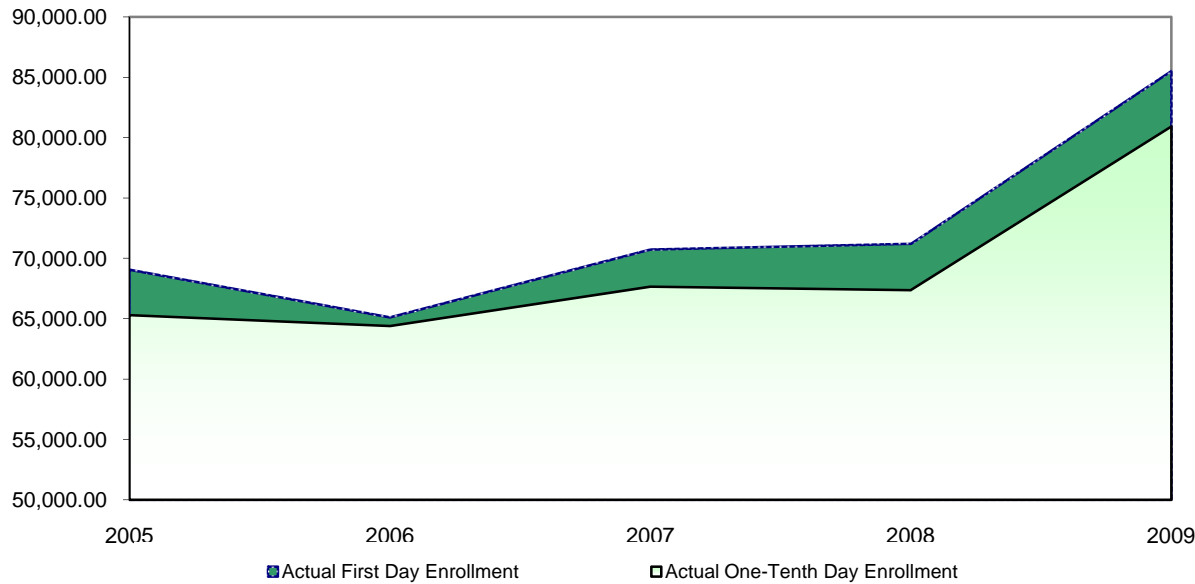
If there are questions regarding the data contained within this report, please contact Mark Woods, Research Analyst, at (248) 232-4522.

NOTE: The format of the report allows you to use an interactive table of contents that will appear in the left margin by **pressing the F4 button**. This will allow you to quickly maneuver through the document.

**Oakland Community College
 Official Enrollment Report - Student Credit Hours
 Summer I 2009 - One-Tenth Day
 College-Wide**

	2005	2006	2007	2008	2009	1-Year % Change	5-Year % Change
Actual First Day Enrollment	69,058.50	65,117.00	70,743.50	71,206.50	85,528.50	20.1%	23.8%
Actual One-Tenth Day Enrollment	65,308.50	64,402.50	67,662.00	67,373.50	80,928.50	20.1%	23.9%
% of Actual First Day Enrollment	94.6%	98.9%	95.6%	94.6%	94.6%		

**Actual One-Tenth Day Enrollment
 Compared to First Day Enrollment**



Summary

In comparison with the One-Tenth Day of Session, Summer I 2008, actual credit hours have increased by 20.1%.

The five-year percentage change for actual student credit hours is showing an increase of 23.9%.

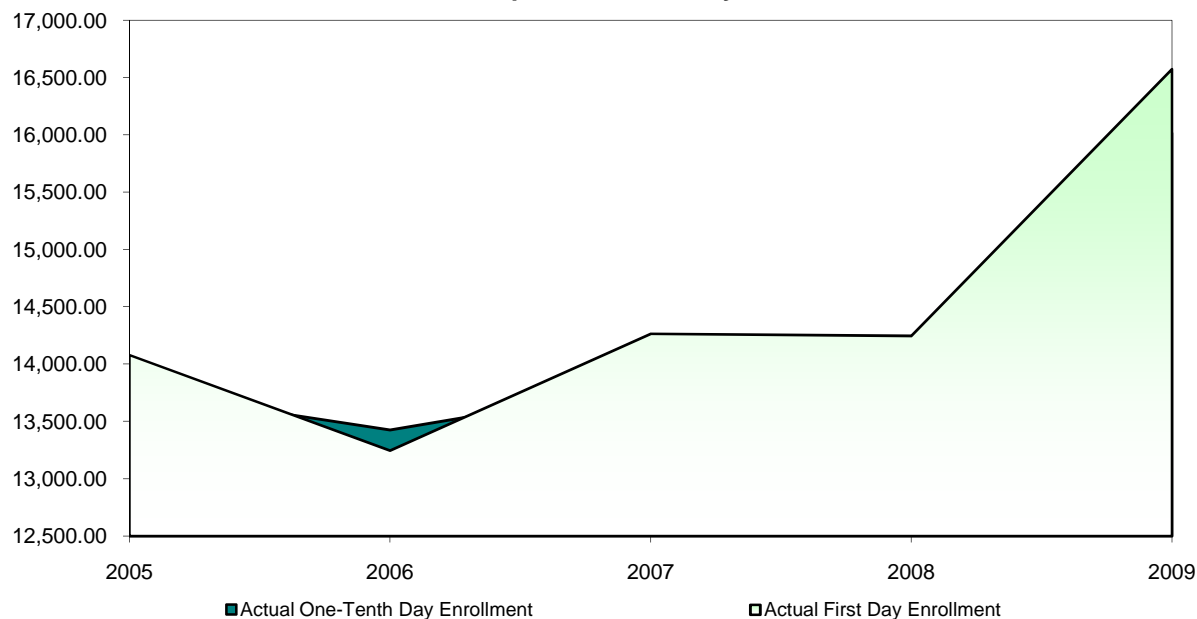
Student Credit Hours, as of the One-Tenth Day of Session, Summer I 2009, are 94.6% of the First Day of Session, Summer I 2009.

NOTE: The actual student credit hours are based on credit courses only.

**Oakland Community College
 Official Enrollment Report - Student Headcount
 Summer I 2009 - One-Tenth Day
 College-Wide**

	2005	2006	2007	2008	2009	1-Year % Change	5-Year % Change
Actual First Day Enrollment	14,079.00	13,246.00	14,264.00	14,247.00	16,573.00	16.3%	17.7%
Actual One-Tenth Day Enrollment	13,773.00	13,426.00	13,808.00	13,756.00	16,016.00	16.4%	16.3%
% of Actual First Day Enrollment	97.8%	101.4%	96.8%	96.6%	96.6%		

**Actual One-Tenth Day Enrollment
 Compared to First Day Enrollment**



Summary

The One-Tenth Day of Session student headcount increased 16.4% from Summer I 2008 to Summer I 2009.

The five-year percentage change shows a 16.3% increase in actual student headcount.

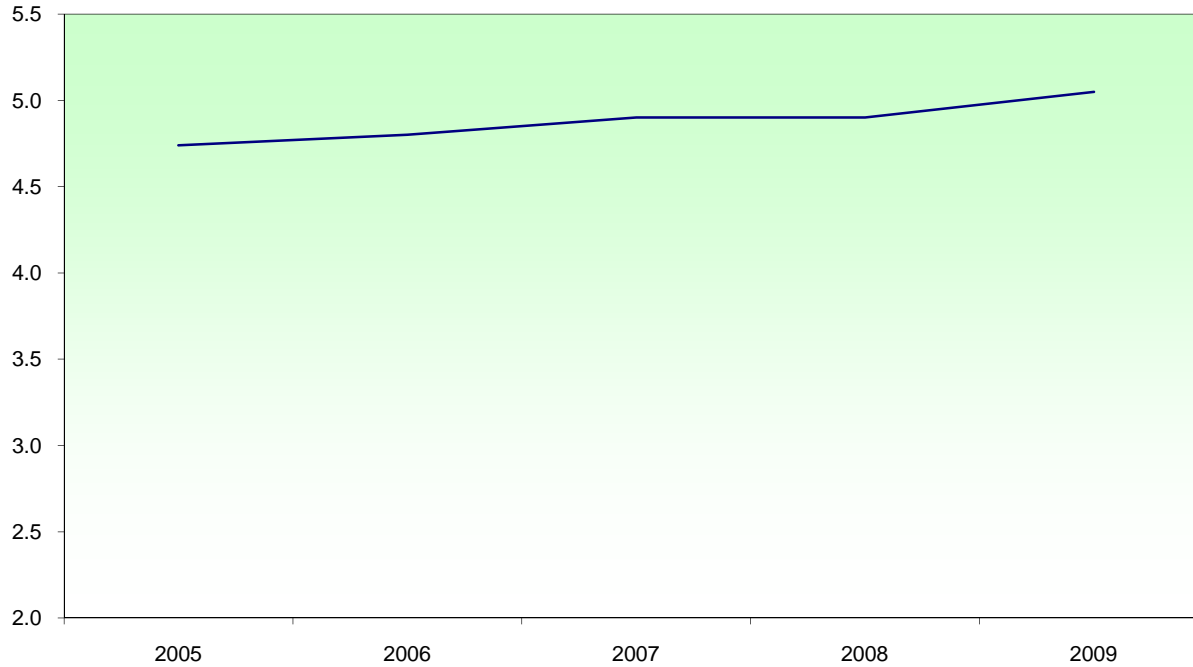
Student headcount, as of the One-Tenth Day of Session, Summer I 2009, is at 96.6% of First Day of Session, Summer I 2009.

NOTE: Summation of campus headcounts do not equal college-wide totals due to attendance at more than one campus.

**Oakland Community College
 Official Enrollment Report - Credit Hours Per Student
 Summer I 2009 - One-Tenth Day
 College-Wide**

	2005	2006	2007	2008	2009	1-Year % Change	5-Year % Change
Actual One-Tenth Day Credit Hours	65,308.50	64,402.50	67,662.00	67,373.50	80,928.50	20.1%	23.9%
Actual One-Tenth Day Headcount	13,773.00	13,426.00	13,808.00	13,756.00	16,016.00	16.4%	16.3%
Credit Hours Per Student	4.74	4.80	4.90	4.90	5.05	3.1%	6.5%

Credit Hours Per Student Ratio



Summary

For the One-Tenth Day of Session, Summer I 2009, students enrolled in an average of 5.05 credits college-wide. This represents a 3.1% increase in credit hours per student from Summer I 2008.

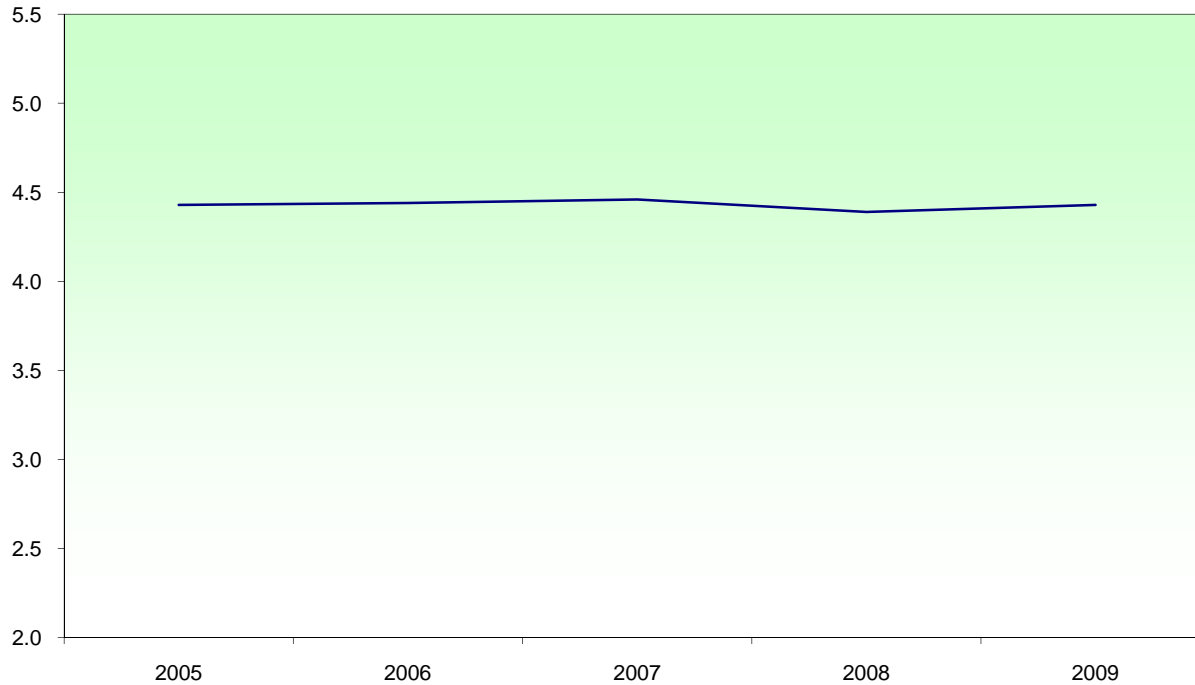
The five-year percentage change for credit hours per student shows an increase of 6.5%.

NOTE: Summation of campus headcounts do not equal college-wide totals due to attendance at more than one campus.

**Oakland Community College
 Official Enrollment Report - Credit Hours Per Student
 Summer I 2009 - One-Tenth Day
 Auburn Hills**

	2005	2006	2007	2008	2009	1-Year % Change	5-Year % Change
Actual One-Tenth Day Credit Hours	17,641.00	17,445.00	17,709.00	17,975.00	20,950.00	16.6%	18.8%
Actual One-Tenth Day Headcount	3,981.00	3,931.00	3,971.00	4,096.00	4,734.00	15.6%	18.9%
Credit Hours Per Student	4.43	4.44	4.46	4.39	4.43	0.9%	0.0%

Credit Hours Per Student Ratio



Summary

For the One-Tenth Day of Session, Summer I 2009, students at Auburn Hills enrolled in an average of 4.43 credits. This represents a 0.9% increase in credit hours per student from Summer I 2008.

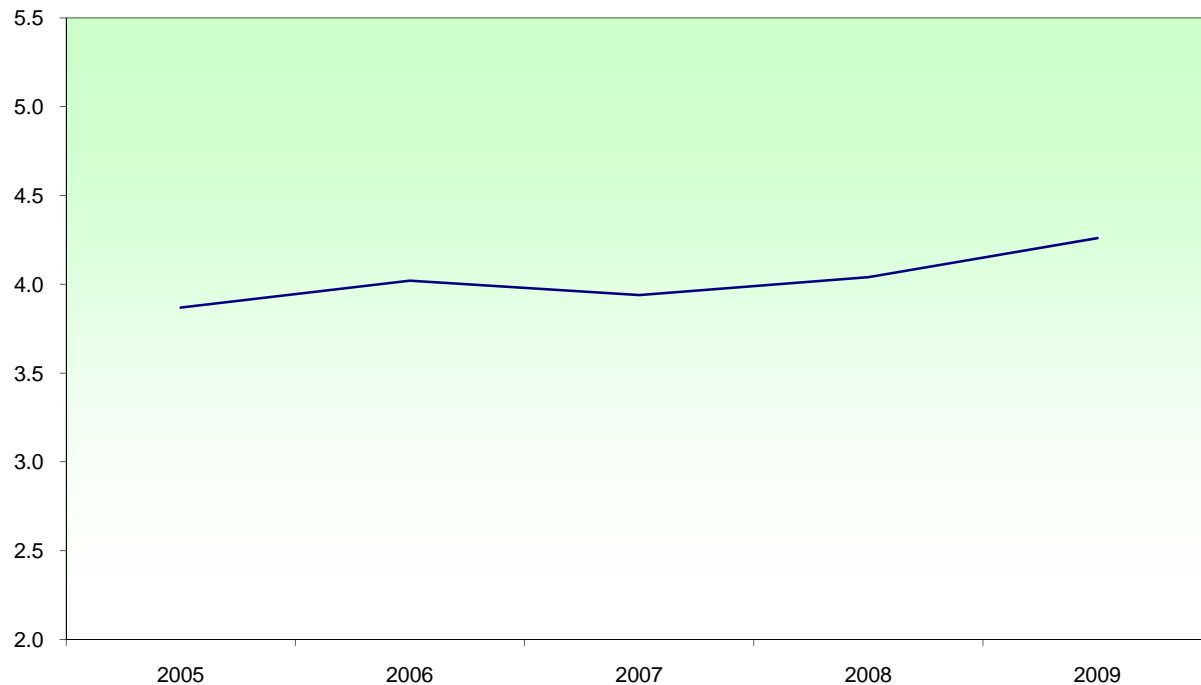
The five-year percentage change for credit hours per student shows no change.

NOTE: Summation of campus headcounts do not equal college-wide totals due to attendance at more than one campus.

**Oakland Community College
 Official Enrollment Report - Credit Hours Per Student
 Summer I 2009 - One-Tenth Day
 Highland Lakes**

	2005	2006	2007	2008	2009	1-Year % Change	5-Year % Change
Actual One-Tenth Day Credit Hours	9,606.50	9,938.50	9,694.00	9,493.50	12,725.50	34.0%	32.5%
Actual One-Tenth Day Headcount	2,480.00	2,475.00	2,461.00	2,348.00	2,990.00	27.3%	20.6%
Credit Hours Per Student	3.87	4.02	3.94	4.04	4.26	5.4%	10.1%

Credit Hours Per Student Ratio



Summary

For the One-Tenth Day of Session, Summer I 2009, students at Highland Lakes enrolled in an average of 4.26 credits. This represents a 5.4% increase in credit hours per student from Summer I 2008.

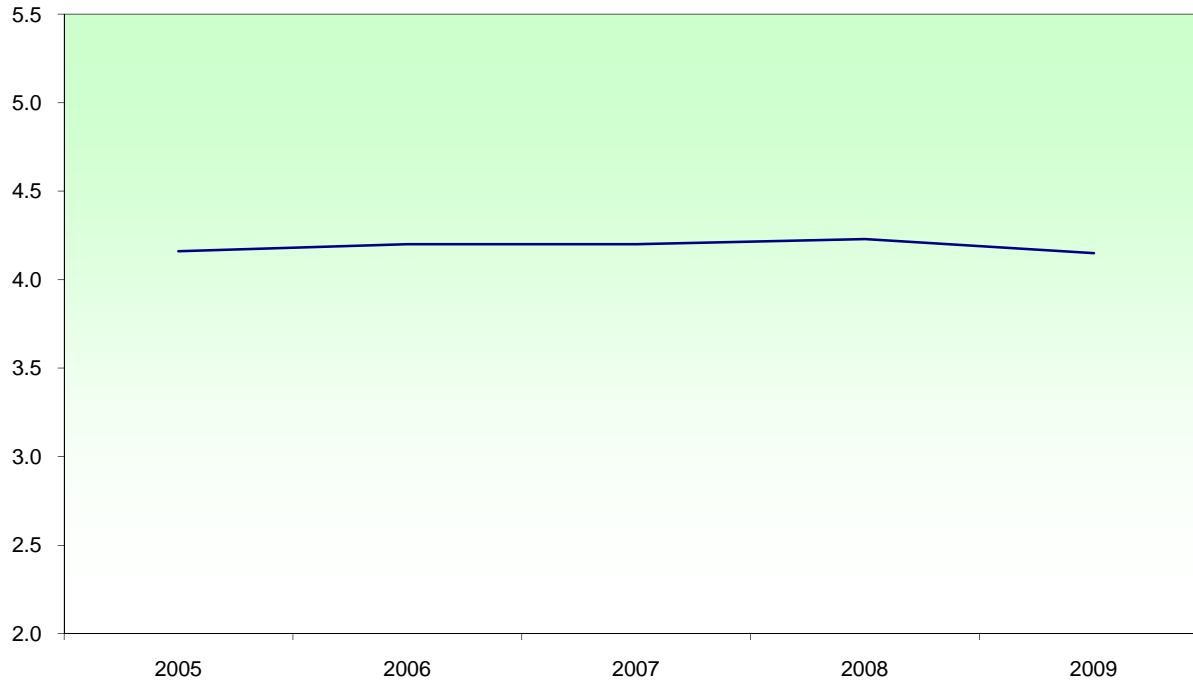
The five-year percentage change for credit hours per student shows an increase of 10.1%.

NOTE: Summation of campus headcounts do not equal college-wide totals due to attendance at more than one campus.

**Oakland Community College
 Official Enrollment Report - Credit Hours Per Student
 Summer I 2009 - One-Tenth Day
 Orchard Ridge**

	2005	2006	2007	2008	2009	1-Year % Change	5-Year % Change
Actual One-Tenth Day Credit Hours	15,929.00	15,295.00	16,636.00	15,787.00	18,331.00	16.1%	15.1%
Actual One-Tenth Day Headcount	3,831.00	3,639.00	3,958.00	3,730.00	4,413.00	18.3%	15.2%
Credit Hours Per Student	4.16	4.20	4.20	4.23	4.15	-1.9%	-0.2%

Credit Hours Per Student Ratio



Summary

For the One-Tenth Day of Session, Summer I 2009, students at Orchard Ridge enrolled in an average of 4.15 credits. This represents a 1.9% decrease in credit hours per student from Summer I 2008.

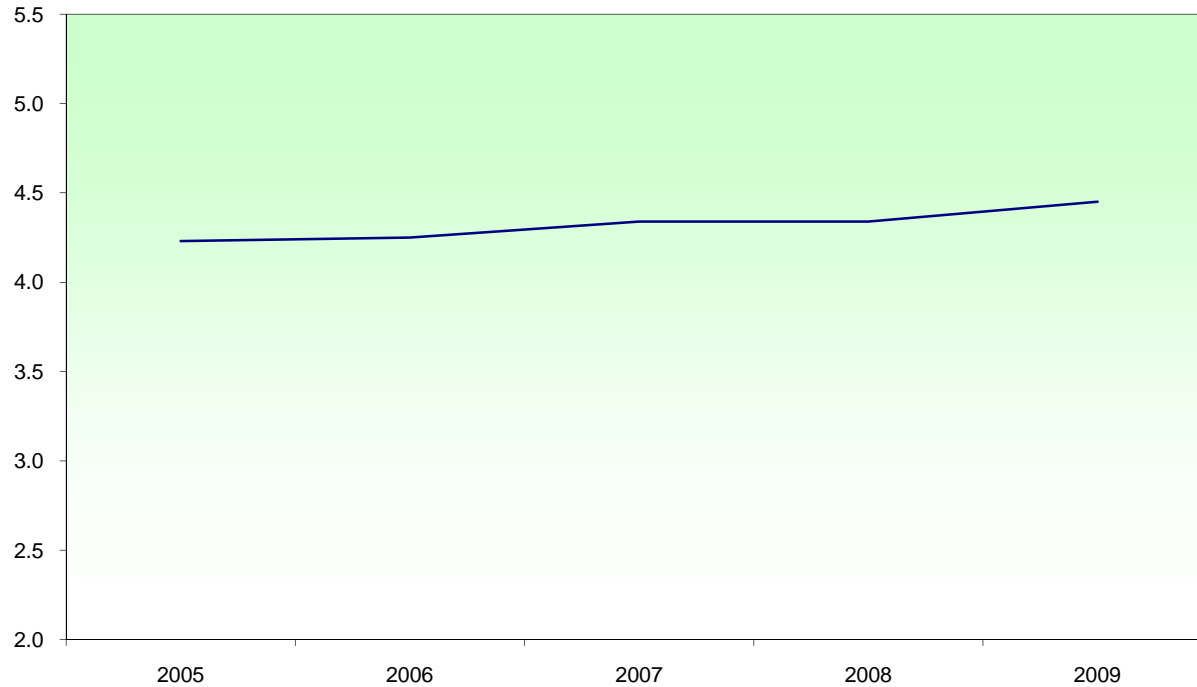
The five-year percentage change for credit hours per student shows a decrease of 0.2%.

NOTE: Summation of campus headcounts do not equal college-wide totals due to attendance at more than one campus.

**Oakland Community College
 Official Enrollment Report - Credit Hours Per Student
 Summer I 2009 - One-Tenth Day
 Royal Oak**

	2005	2006	2007	2008	2009	1-Year % Change	5-Year % Change
Actual One-Tenth Day Credit Hours	15,210.00	15,613.00	16,694.00	17,130.00	20,495.00	19.6%	34.7%
Actual One-Tenth Day Headcount	3,600.00	3,677.00	3,843.00	3,949.00	4,607.00	16.7%	28.0%
Credit Hours Per Student	4.23	4.25	4.34	4.34	4.45	2.5%	5.2%

Credit Hours Per Student Ratio



Summary

For the One-Tenth Day of Session, Summer I 2009, students at Royal Oak enrolled in an average of 4.45 credits. This represents a 2.5% increase in credit hours per student from Summer I 2008.

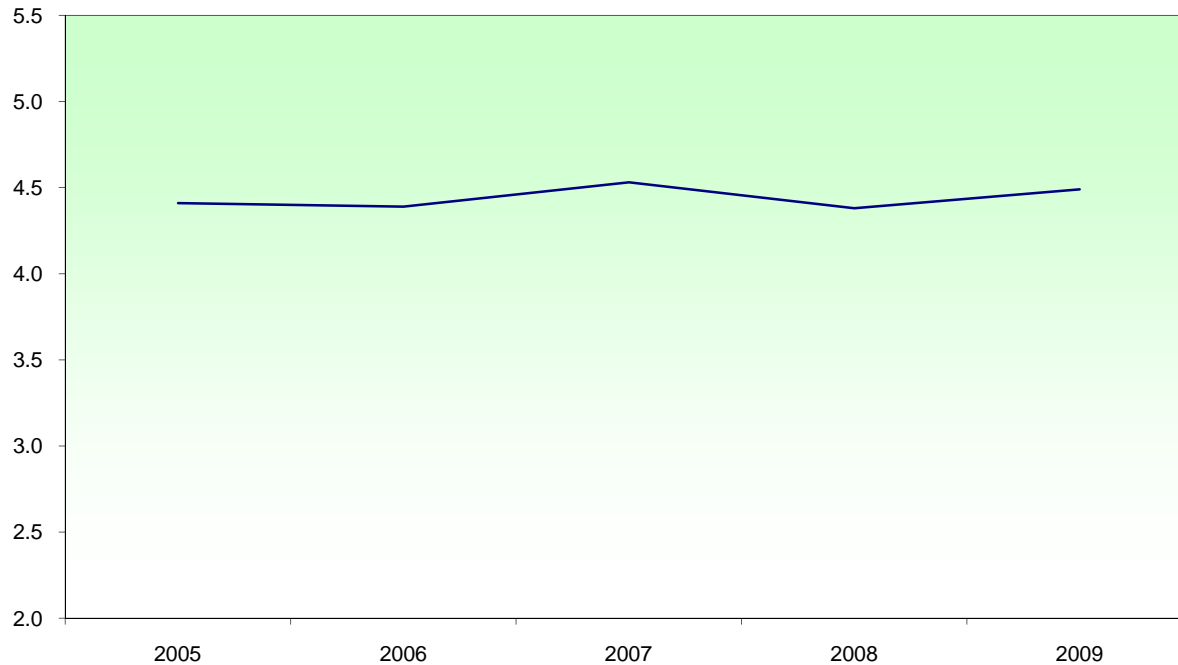
The five-year percentage change for credit hours per student shows an increase of 5.2%.

NOTE: Summation of campus headcounts do not equal college-wide totals due to attendance at more than one campus.

**Oakland Community College
 Official Enrollment Report - Credit Hours Per Student
 Summer I 2009 - One-Tenth Day
 Southfield**

	2005	2006	2007	2008	2009	1-Year % Change	5-Year % Change
Actual One-Tenth Day Credit Hours	6,919.00	6,111.00	6,929.00	6,987.00	8,417.00	20.5%	21.7%
Actual One-Tenth Day Headcount	1,570.00	1,391.00	1,529.00	1,596.00	1,873.00	17.4%	19.3%
Credit Hours Per Student	4.41	4.39	4.53	4.38	4.49	2.5%	1.8%

Credit Hours Per Student Ratio



Summary

For the One-Tenth Day of Session, Summer I 2009, students at Southfield enrolled in an average of 4.49 credits. This represents a 2.5% increase in credit hours per student from Summer I 2008.

The five-year percentage change for credit hours per student shows an increase of 1.80%.

NOTE: Summation of campus headcounts do not equal college-wide totals due to attendance at more than one campus.