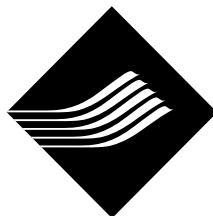
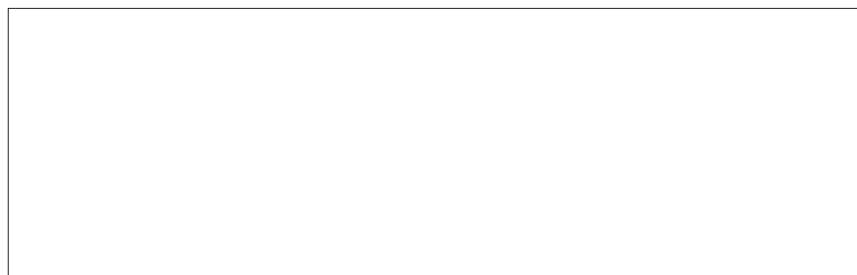


Institutional Research Report



OAKLAND
COMMUNITY
COLLEGE



OAKLAND
COMMUNITY
COLLEGE

**Official Enrollment Report
One Tenth Day of Session, Winter 2009**

**Prepared by:
The Office of Institutional Research
January 2009**

TABLE OF CONTENTS

Executive Summary	4
One-Tenth Day of Session, Student Credit Hours	5
One-Tenth Day of Session, Student Headcount	6
One-Tenth Day of Session, Student Credit Hours per Student	
College-Wide	7
Auburn Hills	8
Highland Lakes	9
Orchard Ridge	10
Royal Oak	11
Southfield	12



OAKLAND
COMMUNITY
COLLEGE

**OFFICIAL ENROLLMENT
WINTER 2009, ONE-TENTH DAY OF SESSION (01/23/2009) REPORT
EXECUTIVE SUMMARY**

The following report contains data related to:

- 1) Student credit hours
- 2) Total student headcount
- 3) Credits per student

The Office of Institutional Research has added a section comparing College-wide One-Tenth Day enrollment figures with First Day of Session figures for the same term. In addition, student credit hours and headcounts *by campus* can be found in the Credit Hours per Student tables.

In summary:

- College-wide Student Credit Hours (219,350.00) **increased** by 10.5% when compared with the same time period last year. Over the five-year period (2005 to 2009), total Student Credit Hours **increased** by 16.5%.
- Student Headcount (25,989) at the college-wide level has **increased** by 8.3% since 2008, with an **increase** of 9.7% since Winter 2005.
- College-wide Credit Hours per Student (8.44) have **increased** by 2.1% since last year. Over the five-year period, this figure has **increased** by 6.3%.

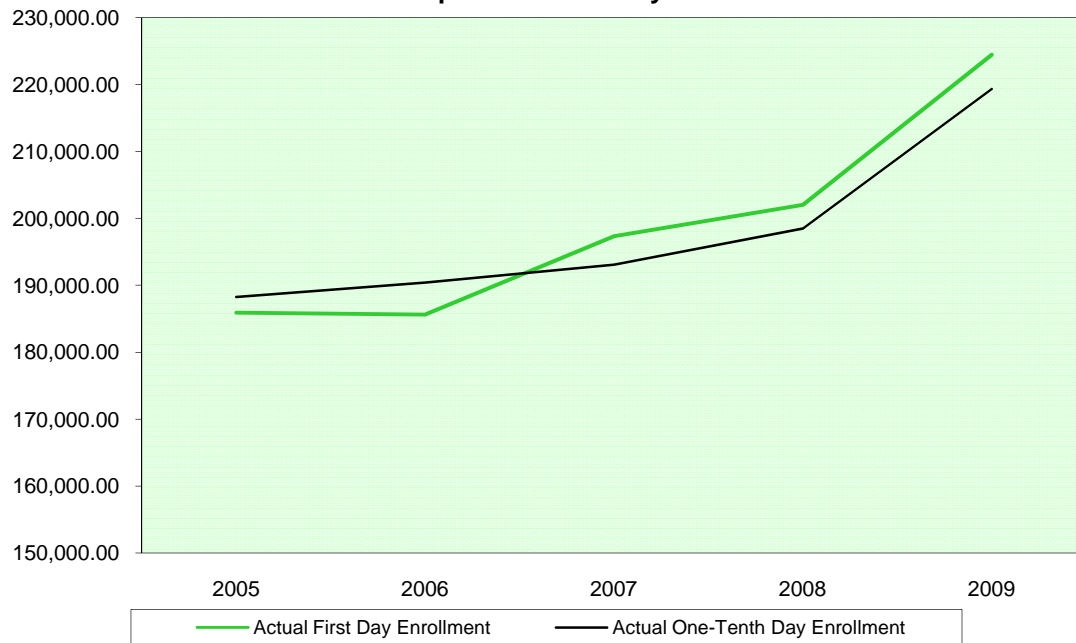
If there are questions regarding the data contained within this report, please contact Mark Woods, Research Analyst, at (248) 232-4522.

NOTE: The format of the report allows you to use an interactive table of contents that will appear in the left margin by **pressing the F4 button**. This will allow you to quickly maneuver through the document.

**Oakland Community College
Official Enrollment Report - Student Credit Hours
Winter 2009 - One-Tenth Day
College-Wide**

	2005	2006	2007	2008	2009	1-Year % Change	5-Year % Change
Actual First Day Enrollment	185,916.50	185,615.00	197,345.00	202,030.50	224,453.50	11.1%	20.7%
Actual One-Tenth Day Enrollment	188,239.50	190,397.00	193,066.00	198,482.00	219,350.00	10.5%	16.5%
% of Actual First Day Enrollment	101.2%	102.6%	97.8%	98.2%	97.7%		

**Actual One-Tenth Day Enrollment
Compared to First Day Enrollment**



Summary

In comparison with the One-Tenth Day of Session, Winter 2008, actual credit hours have increased by 10.5%.

The five-year percentage change for actual student credit hours is showing an increase of 16.5%.

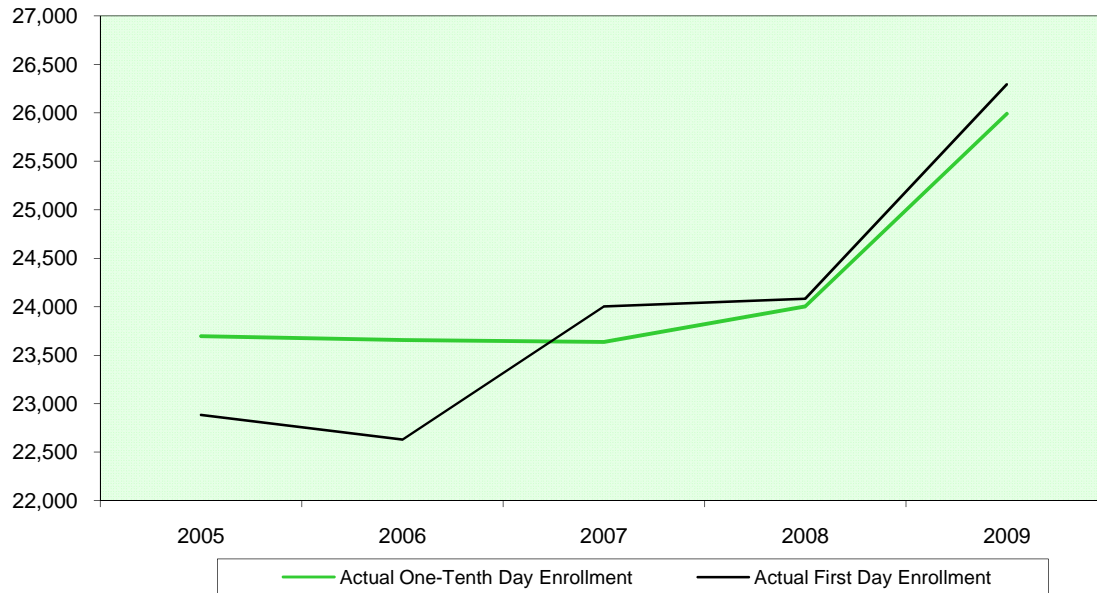
Student Credit Hours, as of the One-Tenth Day of Session, Winter 2009, are 97.7% of the First Day of Session, Winter 2009.

NOTE: The actual student credit hours are based on credit courses only.

**Oakland Community College
Official Enrollment Report - Student Headcount
Winter 2009 - One Tenth Day
College-Wide**

	2005	2006	2007	2008	2009	1-Year % Change	5-Year % Change
Actual First Day Enrollment	22,884	22,630	24,004	24,084	26,295	9.2%	14.9%
Actual One-Tenth Day Enrollment	23,696	23,656	23,635	24,000	25,989	8.3%	9.7%
% of Actual First Day Enrollment	103.5%	104.5%	98.5%	99.7%	98.8%		

**Actual One-Tenth Day of Session
Student Headcount**



Summary

The One-Tenth Day of Session student headcount increased 8.3% from Winter 2008 to Winter 2009.

The five-year percentage change shows a 9.7% increase in actual student headcount.

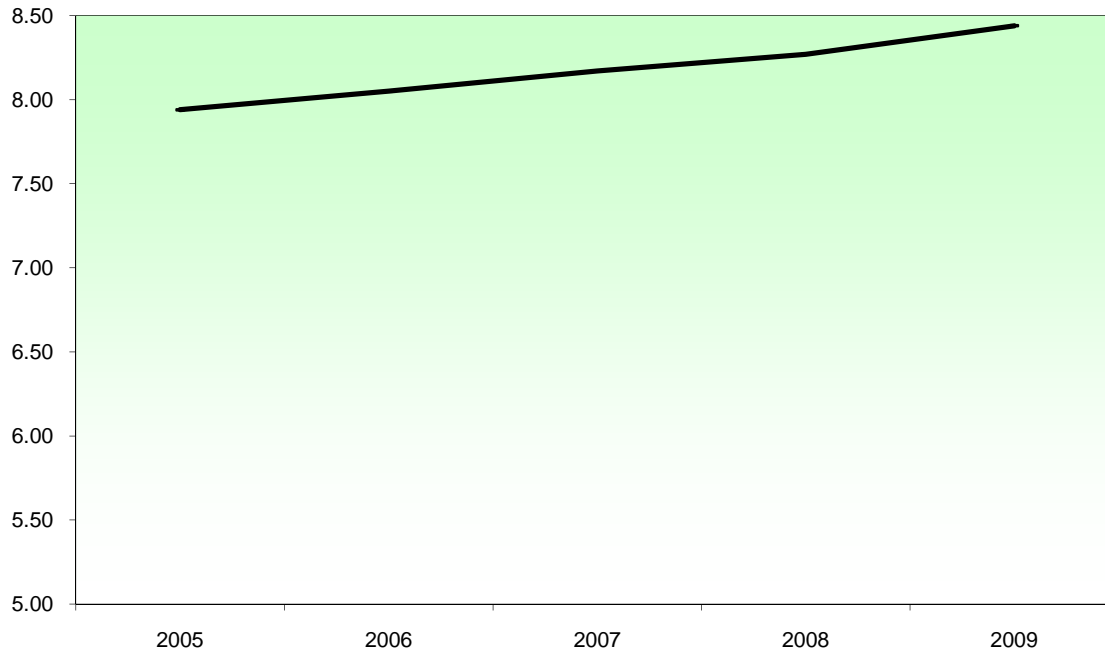
Student headcount, as of the One-Tenth Day of Session, Winter 2009, is at 98.8% of First-Day of Session, Winter 2009.

NOTE: Summation of campus headcounts do not equal totals due to attendance at more than one campus.

**Oakland Community College
 Official Enrollment Report - Credit Hours Per Student
 Winter 2009 - One-Tenth Day
 College-Wide**

	2005	2006	2007	2008	2009	1-Year % Change	5-Year % Change
Actual One-Tenth Day Credit Hours	188,239.50	190,397.00	193,066.00	198,482.00	219,350.00	10.5%	16.5%
Actual One-Tenth Day Headcount	23,696	23,656	23,635	24,000	25,989	8.3%	9.7%
Credit Hours Per Student /OTD	7.94	8.05	8.17	8.27	8.44	2.1%	6.3%

Credit Hours Per Student Ratio



Summary

For the One-Tenth Day of Session, Winter 2009, students enrolled in an average of 8.44 credits college-wide. This represents a 2.1% increase in credit hours per student from Winter 2008.

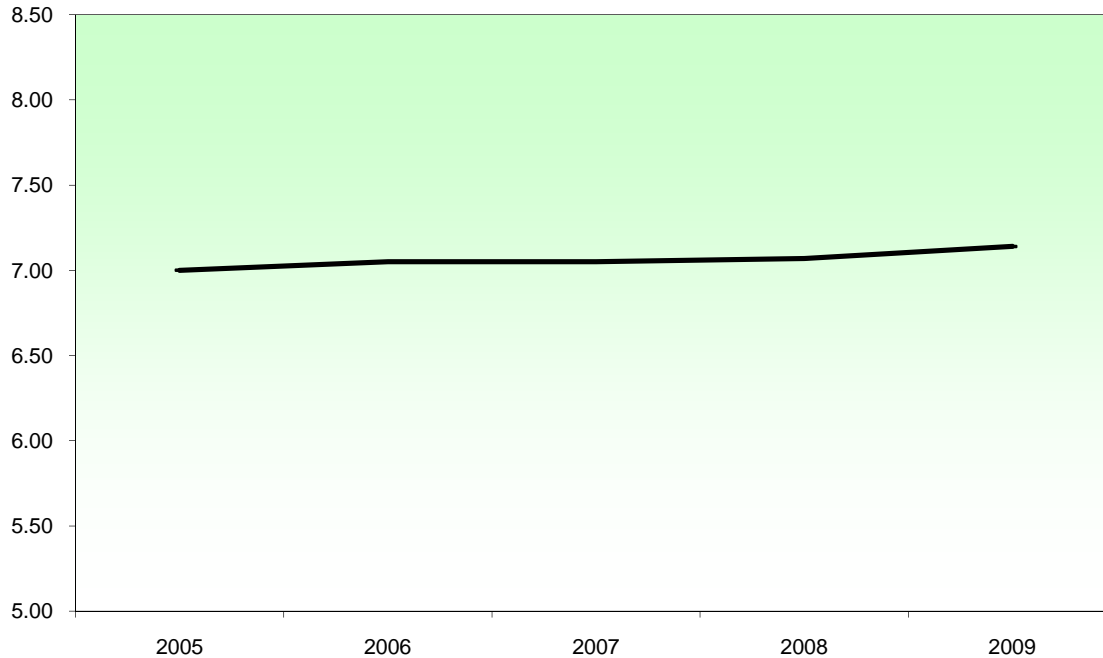
The five-year percentage change for credit hours per student shows an increase of 6.3%.

NOTE: Summation of campus headcounts do not equal totals due to attendance at more than one campus.

**Oakland Community College
 Official Enrollment Report - Credit Hours Per Student
 Winter 2009 - One-Tenth Day
 Auburn Hills**

	2005	2006	2007	2008	2009	1-Year % Change	5-Year % Change
Actual One-Tenth Day Credit Hours	56,354.00	56,425.00	57,006.00	57,925.00	63,488.00	9.6%	12.7%
Actual One-Tenth Day Headcount	8,056	8,003	8,091	8,188	8,893	8.6%	10.4%
Credit Hours Per Student /OTD	7.00	7.05	7.05	7.07	7.14	1.0%	2.0%

Credit Hours Per Student Ratio



Summary

For the One-Tenth Day of Session, Winter 2009, students at Auburn Hills enrolled in an average of 7.14 credits. This represents a 1.0% increase in credit hours per student from Winter 2008.

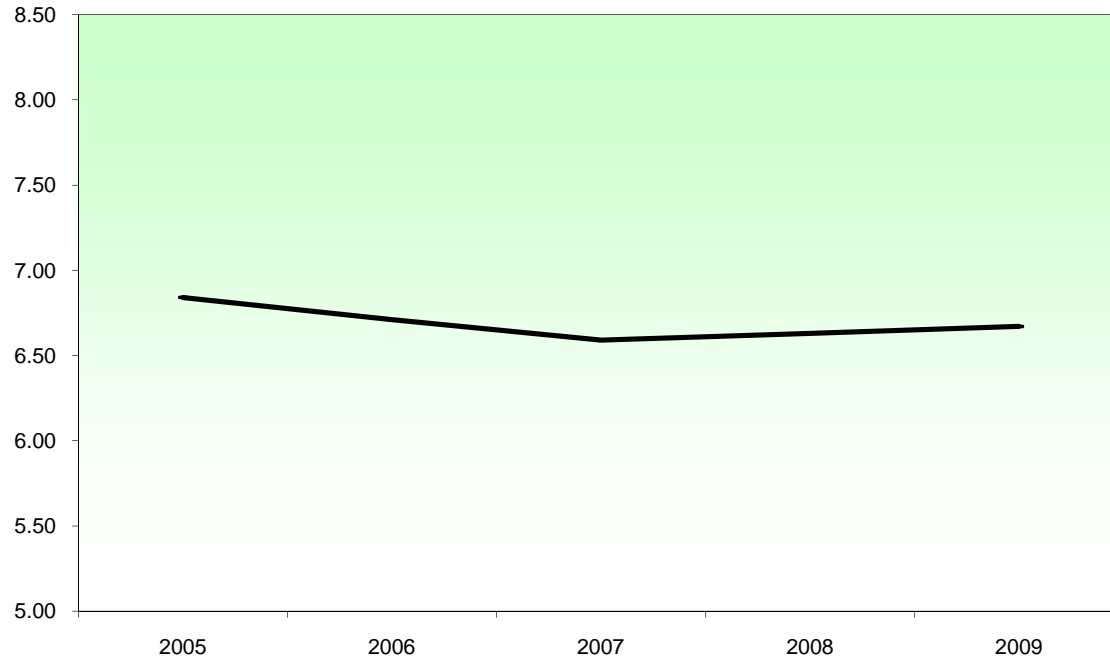
The five-year percentage change for credit hours per student shows an increase of 2.0%.

NOTE: Summation of campus headcounts do not equal totals due to attendance at more than one campus.

**Oakland Community College
 Official Enrollment Report - Credit Hours Per Student
 Winter 2009 - One-Tenth Day
 Highland Lakes**

	2005	2006	2007	2008	2009	1-Year % Change	5-Year % Change
Actual One-Tenth Day Credit Hours	31,302.00	31,959.00	31,136.00	32,377.00	37,303.50	15.2%	19.2%
Actual One-Tenth Day Headcount	4,578	4,763	4,728	4,885	5,591	14.5%	22.1%
Credit Hours Per Student /OTD	6.84	6.71	6.59	6.63	6.67	0.6%	-2.5%

Credit Hours Per Student Ratio



Summary

For the One-Tenth Day of Session, Winter 2009, students at Highland Lakes enrolled in an average of 6.67 credits. This represents a 0.6% increase in credit hours per student from Winter 2008.

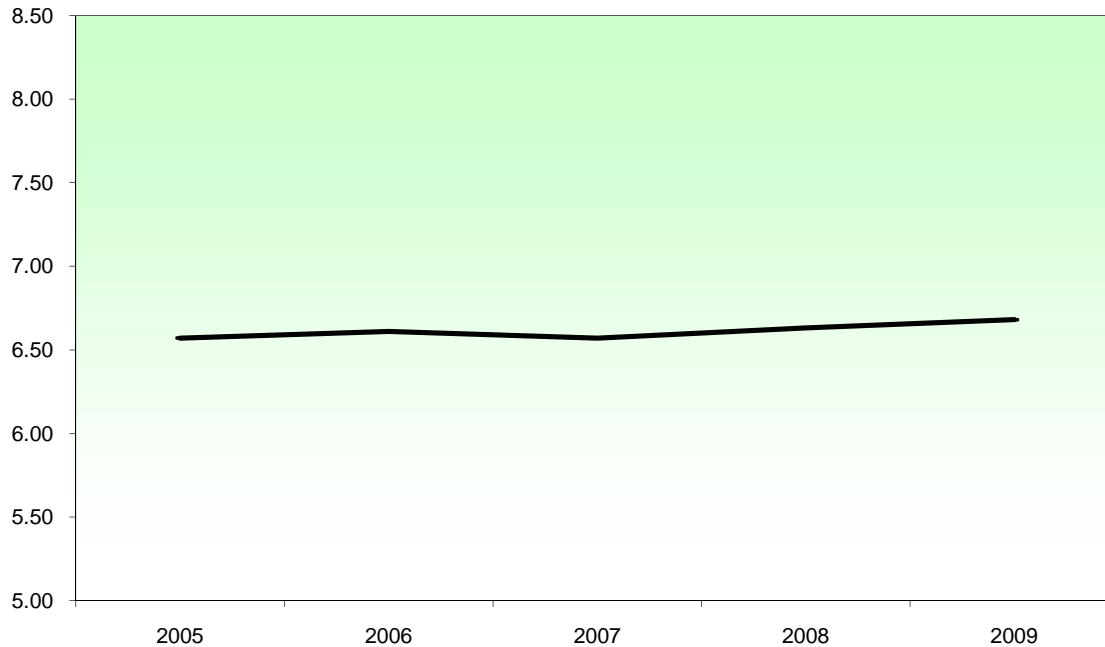
The five-year percentage change for credit hours per student shows a decrease of 2.5%.

NOTE: Summation of campus headcounts do not equal totals due to attendance at more than one campus.

**Oakland Community College
 Official Enrollment Report - Credit Hours Per Student
 Winter 2009 - One-Tenth Day
 Orchard Ridge**

	2005	2006	2007	2008	2009	1-Year % Change	5-Year % Change
Actual One-Tenth Day Credit Hours	48,066.00	49,015.00	50,711.00	51,511.00	54,745.00	6.3%	13.9%
Actual One-Tenth Day Headcount	7,320	7,420	7,721	7,765	8,193	5.5%	11.9%
Credit Hours Per Student /OTD	6.57	6.61	6.57	6.63	6.68	0.8%	1.7%

Credit Hours Per Student Ratio



Summary

For the One-Tenth Day of Session, Winter 2009, students at Orchard Ridge enrolled in an average of 6.68 credits. This represents a 0.8% increase in credit hours per student from Winter 2008.

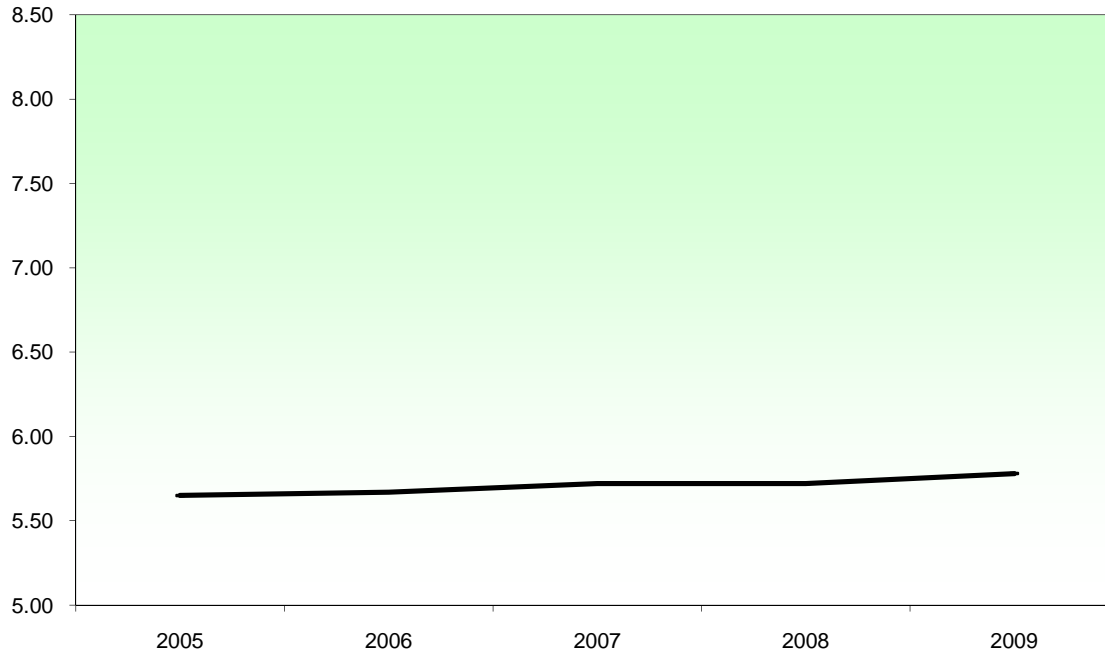
The five-year percentage change for credit hours per student shows an increase of 1.7%.

NOTE: Summation of campus headcounts do not equal totals due to attendance at more than one campus.

**Oakland Community College
 Official Enrollment Report - Credit Hours Per Student
 Winter 2009 - One-Tenth Day
 Royal Oak**

	2005	2006	2007	2008	2009	1-Year % Change	5-Year % Change
Actual One-Tenth Day Credit Hours	35,526.00	36,073.00	36,823.00	38,712.00	42,379.00	9.5%	19.3%
Actual One-Tenth Day Headcount	6,287	6,365	6,436	6,772	7,338	8.4%	16.7%
Credit Hours Per Student /OTD	5.65	5.67	5.72	5.72	5.78	1.0%	2.3%

Credit Hours Per Student Ratio



Summary

For the One-Tenth Day of Session, Winter 2009, students at Royal Oak enrolled in an average of 5.78 credits. This represents a 1.0% increase in credit hours per student from Winter 2008.

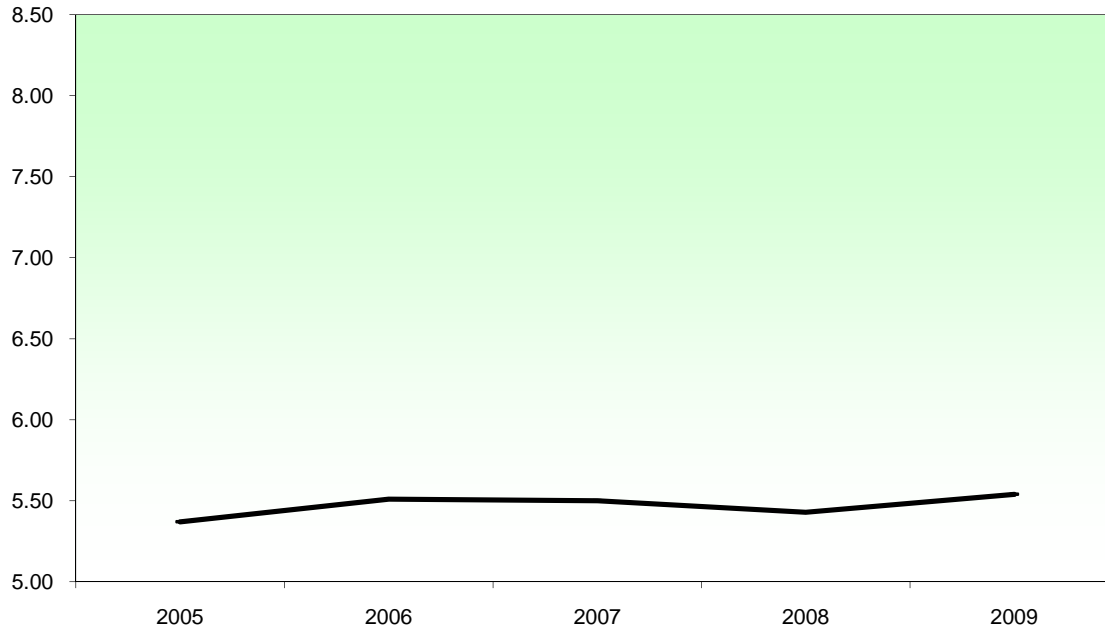
The five-year percentage change for credit hours per student shows an increase of 2.3%.

NOTE: Summation of campus headcounts do not equal totals due to attendance at more than one campus.

**Oakland Community College
 Official Enrollment Report - Credit Hours Per Student
 Winter 2009 - One-Tenth Day
 Southfield**

	2005	2006	2007	2008	2009	1-Year % Change	5-Year % Change
Actual One-Tenth Day Credit Hours	16,991.50	16,921.00	17,390.00	17,957.00	21,434.50	19.4%	26.1%
Actual One-Tenth Day Headcount	3,165	3,072	3,160	3,310	3,872	17.0%	22.3%
Credit Hours Per Student /OTD	5.37	5.51	5.50	5.43	5.54	2.0%	3.2%

Credit Hours Per Student Ratio



Summary

For the One-Tenth Day of Session, Winter 2009, students at Southfield enrolled in an average of 5.54 credits. This represents a 2.0% increase in credit hours per student from Winter 2008.

The five-year percentage change for credit hours per student shows an increase of 3.2%.

NOTE: Summation of campus headcounts do not equal totals due to attendance at more than one campus.